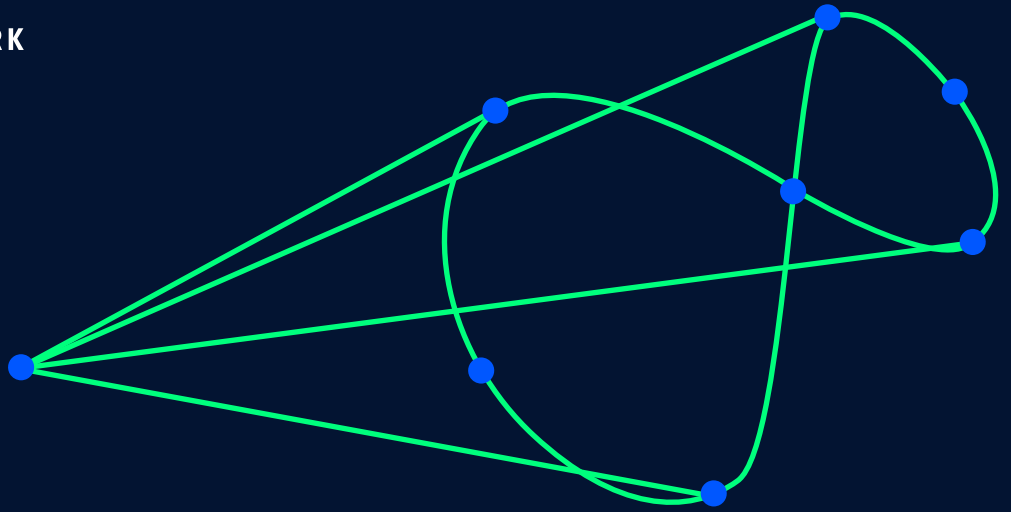




THE ELASTIC NETWORK

# LightAPPS™



## YOUR NETWORK AT YOUR FINGERTIPS

LightAPPS is ECI's suite of SDN network applications that increases network efficiency and utilization, and accelerates and simplifies network operations. LightAPPS improves operational responsiveness, shortens the time to activate services, and avoids human errors. LightAPPS can also be applied to planning network expansion, and to marketing solutions for assessing SLA commitment compliance and associated customer satisfaction.

LightAPPS unlocks your network's potential by leveraging the powers of information and control. Best of all, with LightAPPS you don't have to wait. You get the benefits of SDN today on your existing network.

---

### Increase visibility

consolidated view of inventory,  
SLA, health, and security

---

### Increase automation

'DIY' workflow saves time and  
reduces human errors

---

### Shorten TTM for premium services

with bandwidth-on-demand and  
service calendaring applications

---





## Why we are unique

LightAPPS is the only platform that combines operation on legacy SDH, Native Ethernet, WDM, OTN, MPLS and IP - all in one. This unique, true flexibility allows you to maximize the power of information and to fully utilize LightAPPS' APIs.



## Multivendor is here

LightAPPS works with ECI's LightSOFT and Generic EMS and has strong multivendor capabilities. Non-ECI equipment can be supported quickly and affordably.



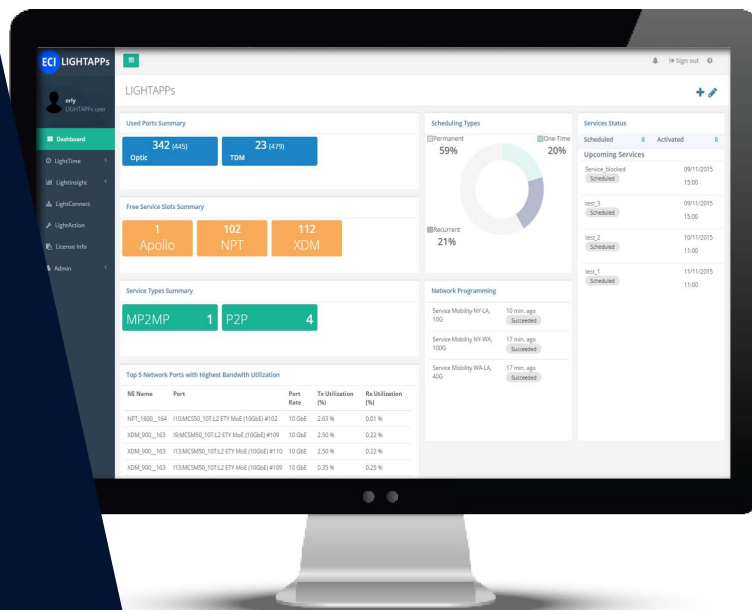
## Openness is a value

LightAPPS is a customizable framework. Dashboards, reports, workflows, and templates can be built from scratch and exported to any format in zero-code fashion.



## We are future-ready

The structure and interfaces of LightAPPS are adapted to work with an SDN controller and orchestrator, with smooth migration to SDN and operation with hybrid networks.





## Provision bandwidth dynamically

LightTIME and LightCONNECT are the perfect solutions for dynamic Bandwidth on Demand, and fast-and-easy service activation. LightCONNECT is controlled through a rich set of portable REST APIs. LightTIME provides a light web app for intuitive and simple service management. Both applications allow service calendaring, and above all, both work with predefined templates, thus making service provisioning effortless, fast, and reliable.

Services of various types can be abstracted into templates.

### Supports multilayer networks

MPLS, Ethernet, OTN, and WDM

### Supports multiple applications

Business VPNs, mobile backhaul, data center interconnect, and transport

**SERVICE INFORMATION**

Template [ETH-MP2MP-Tag-20M-Unpr](#)

Schedule 19/08/2015 20:00  
🕒 Every Monday, Tuesday, Wednesday, Thursday and Friday at 20:00 - 21:00

Status Scheduled  
Last check at 19/08/2015 08:00

Bandwidth 20 Mbps

11 Activated 20:00	21:00	12 Activated 20:00	
18 Activated 20:00	21:00	19 Scheduled 20:00	21:00
25		26	

**SERVICES**

Status		
Scheduled	Activated	Confirmation Pending
1	2	0
Failed Scheduling	Failed Activation	Warning
0	0	0



## Simplify operation tasks

LightACTION is a visual tool to build and execute macros for provisioning, troubleshooting, commissioning, and more. LightACTION comes with a predefined set of automatic flows for service migration, batch provisioning, and root cause analysis. It also allows the user to create new macros and workflows based on action and event building blocks. Workflows can be executed manually, triggered by an event, or scheduled.



## Increase network visibility

LightINSIGHT provides consolidated and analytical views of network use and performance. It advises how to make the most efficient use of the network, plan better for growth, and make the network evolve to deal with traffic surges and possible failures.

LightINSIGHT provides three content areas, each with a dashboard and a list of reports:

### Network inventory

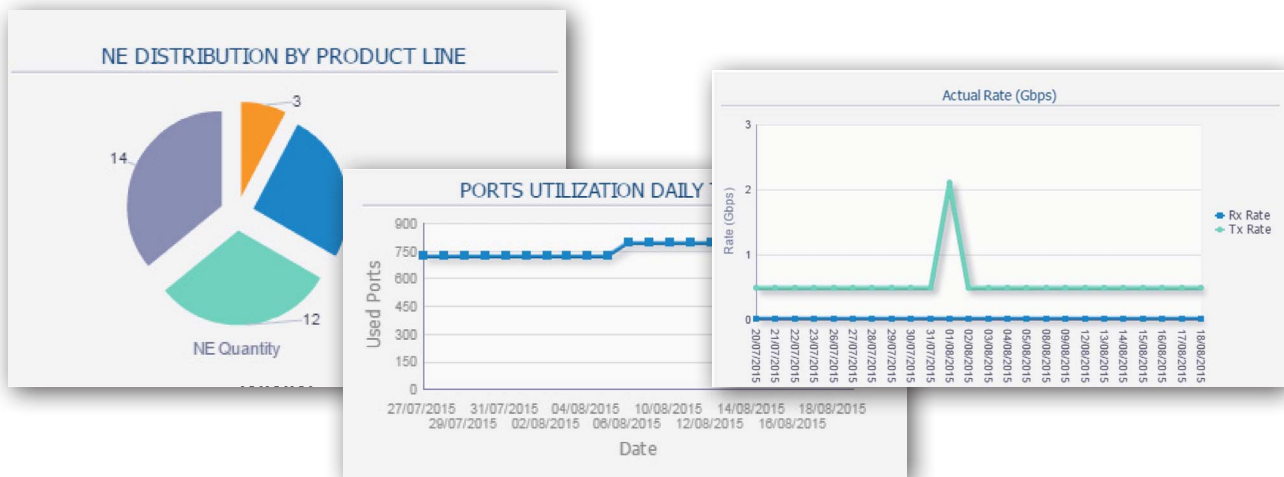
availability and utilization of slots, cards, ports, as well as growth trends and log of changes

### Network performance

actual SLA performance and bandwidth capacity information for various network layers and technologies

### Network health

historical view of alarms, crossing alerts failures, and optical measurement



## Cutting-edge troubleshooting

LightCARE is a new application that will be available soon. It offers an intuitive, cutting-edge solution for troubleshooting optical networks and a faster way to evaluate customer impact, root cause detection, and repair actions.

Contact us to find out how LightAPPS can make your network more efficient

### ABOUT ECI

ECI is a global provider of ELASTIC network solutions to CSPs, utilities as well as data center operators. Along with its long-standing, industry-proven packet-optical transport, ECI offers a variety of SDN/NFV applications, end-to-end network management, a comprehensive cyber security solution, and a range of professional services. ECI's ELASTIC solutions ensure open, future-proof, and secure communications. With ECI, customers have the luxury of choosing a network that can be tailor-made to their needs today - while being flexible enough to evolve with the changing needs of tomorrow. For more information, visit us at [www.ecitele.com](http://www.ecitele.com)

